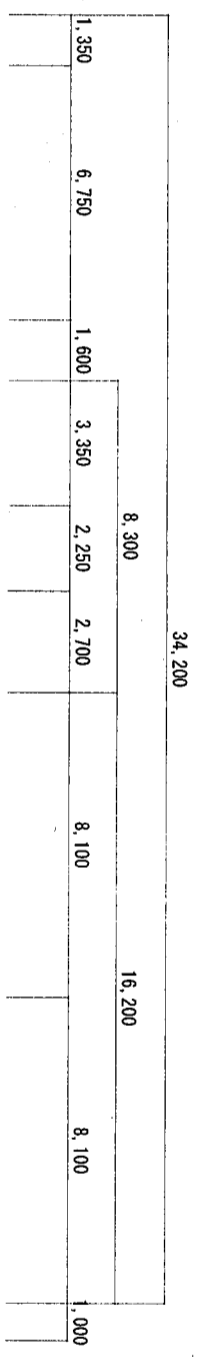
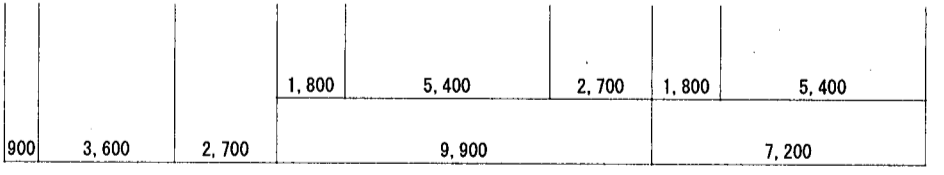
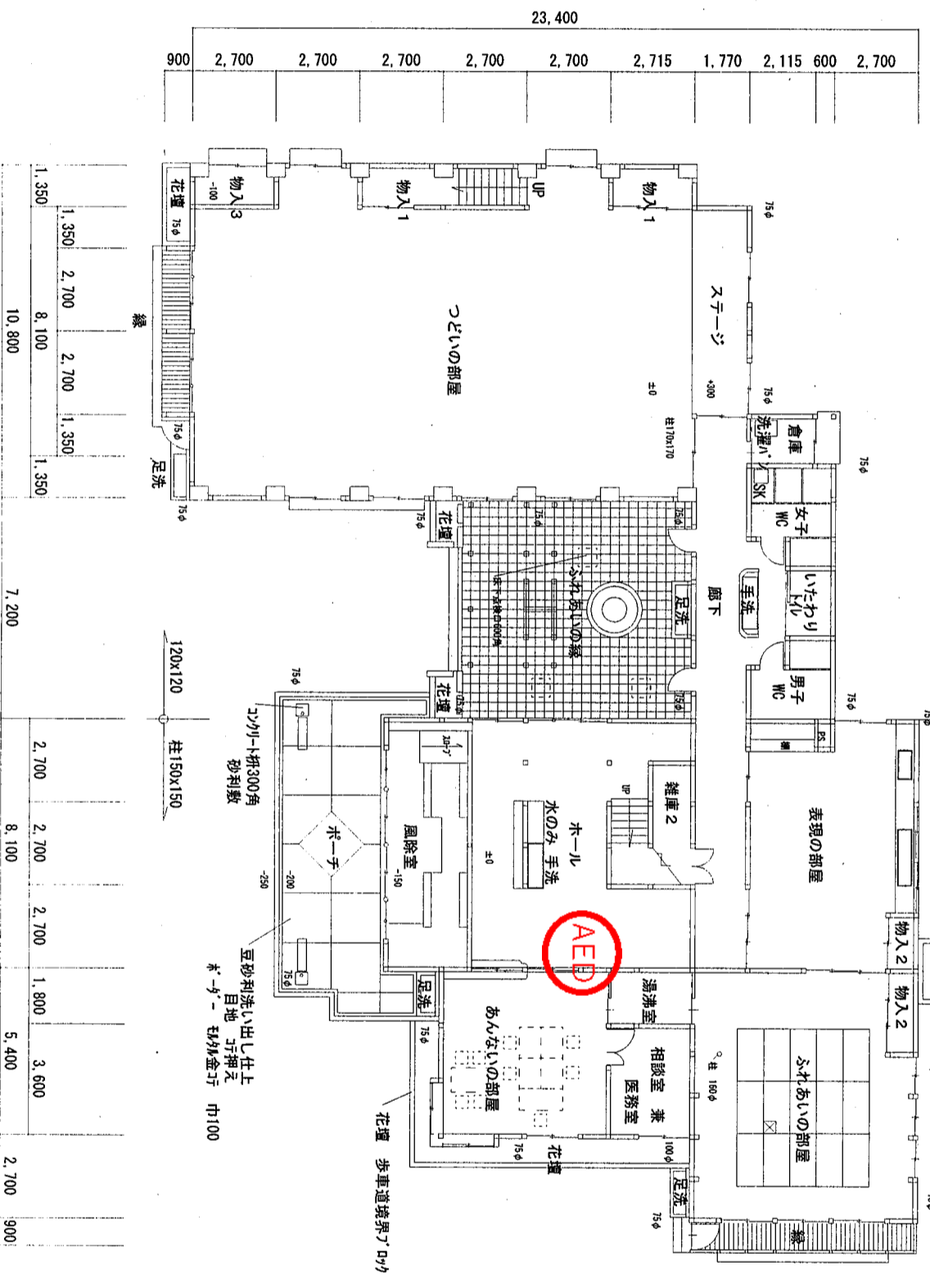


- (X1)
- (X2)
- (X3)
- (X4)
- (X6)
- (X7)
- (X8)
- (X9)
- (X10)
- (X11)
- (X12)
- (X13)
- (X14)
- (X15)
- (X16)

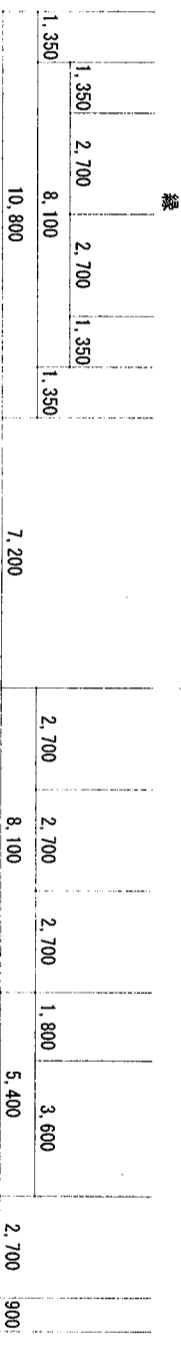


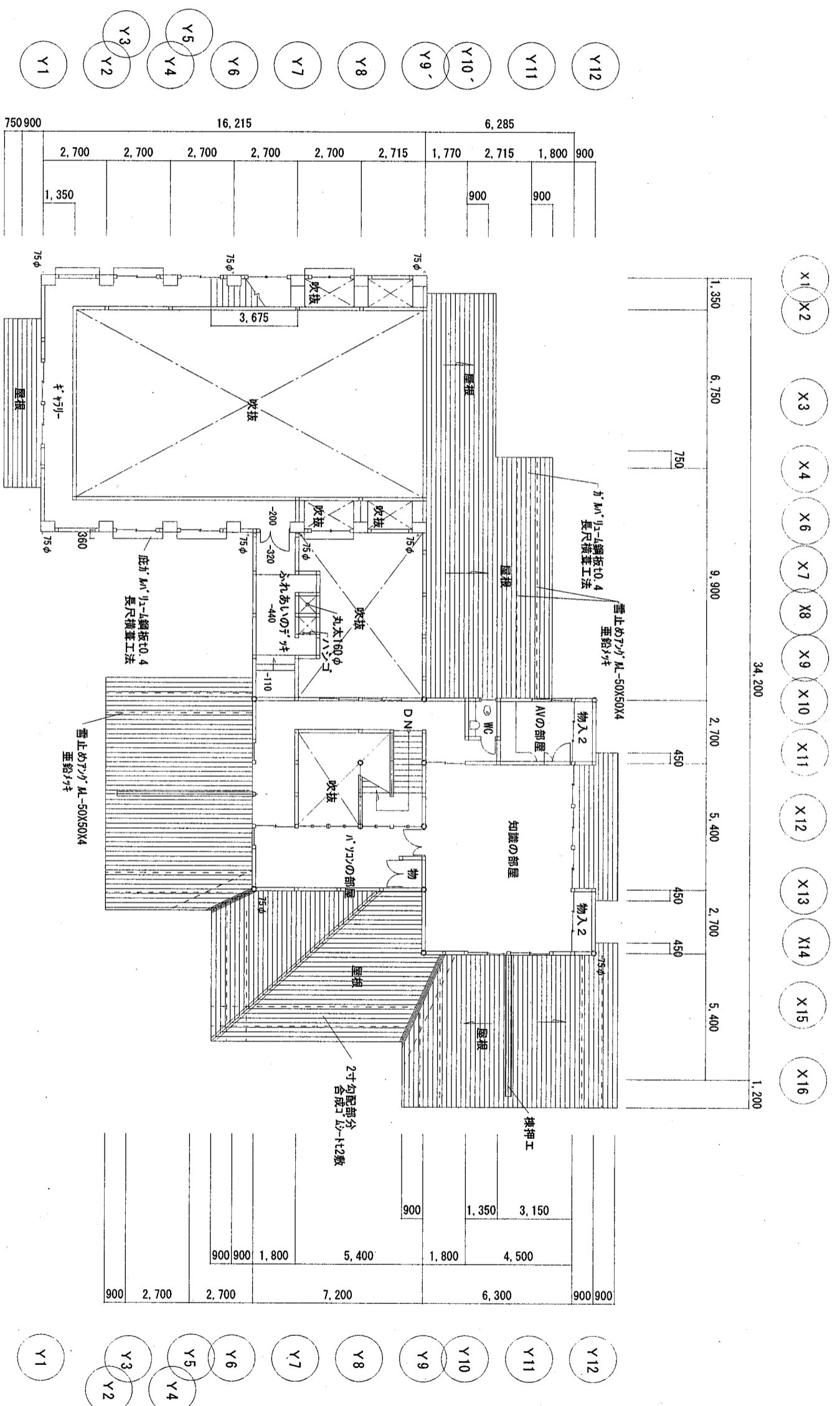
- (Y1)
- (Y2)
- (Y3)
- (Y4)
- (Y5)
- (Y6)
- (Y7)
- (Y8)
- (Y9)
- (Y10)
- (Y11)
- (Y12)



- (Y1)
- (Y2)
- (Y3)
- (Y4)
- (Y5)
- (Y6)
- (Y7)
- (Y8)
- (Y9)
- (Y10)
- (Y11)
- (Y12)

- (X1)
- (X2)
- (X3)
- (X5)
- (X6)
- (X10)
- (X11)
- (X12)
- (X13)
- (X14)
- (X15)
- (X16)

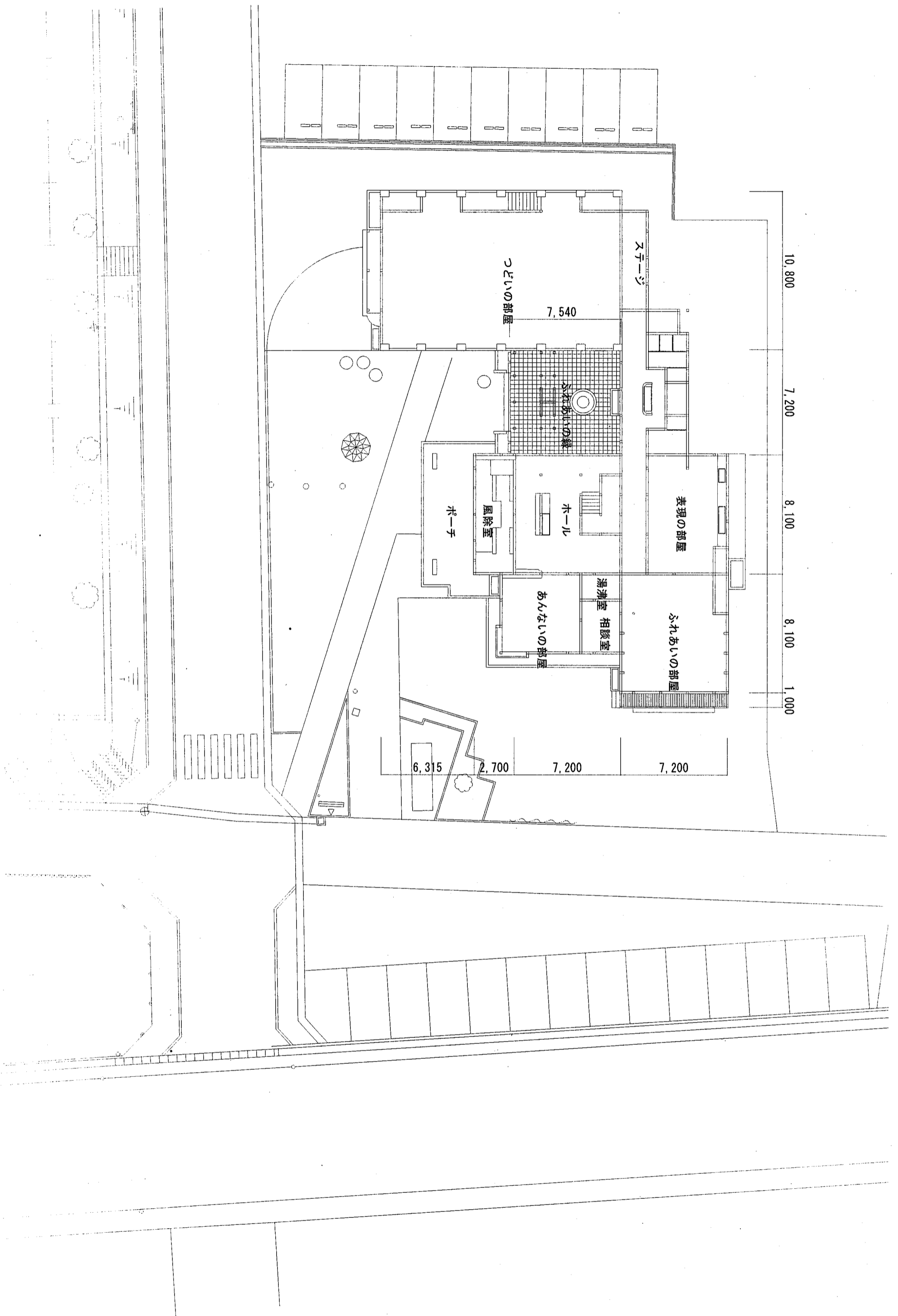




1,350	6,750	9,900	2,700	5,400	2,700	5,400	1,200
1,350	900	1,350	900	1,350	900	1,350	900
1,350	1,800	1,800	900	1,350	2,700	2,700	900
1,350	4,050	4,050	1,350	4,050	2,700	2,700	900
1,350	10,800	7,200	8,100	5,400	900		

900	900	1,800	5,400	1,800	4,500	6,300	900
900	2,700	2,700	7,200	1,800	4,500	6,300	900

- 凡例
- 一般柱 150x150
 - 180x180
 - 120x120
 - 通し柱 150x150
- 2階 床面積 174.77㎡



名称 子どもの城
 設計番号
 縮尺 1/250
 日付 H26.07
 図面番号 A-1

配置図